



Bathing establishment fact sheet

Name of bathing establishment	Salvadori
Address	Lungomare Colombo
City	Castiglioncello – Rosignano (Li)
Contacts	Tel. +39 0586 754194 email: info@bagnisalvadori.it
Website	www.bagnisalvadori.it

TESTED BY: [Handy Superabile Social Promotion Association](#) in summer 2023

Please note The following information refers to the verification date shown at the bottom of each sheet. The Association is not responsible for any significant changes made to the property after the visit.

Summary

Bathing establishment Fact sheet.....	1
Arrival at the facility.....	2
Private/public parking.....	2
Pathway from the parking lot to the main entrance.....	2
Reception welcome.....	3
Bar/restaurant.....	4
Internal pathways and common services.....	5
Internal pathways.....	5
Toilet and shower accessible to guests with reduced mobility.....	5
Changing room.....	7
Beach.....	8
Children's play area.....	9
Pool.....	9
Medical practices/health facilities.....	9

Project carried out with the contribution of




Presidenza del
Consiglio dei Ministri
Ministro per la disabilità



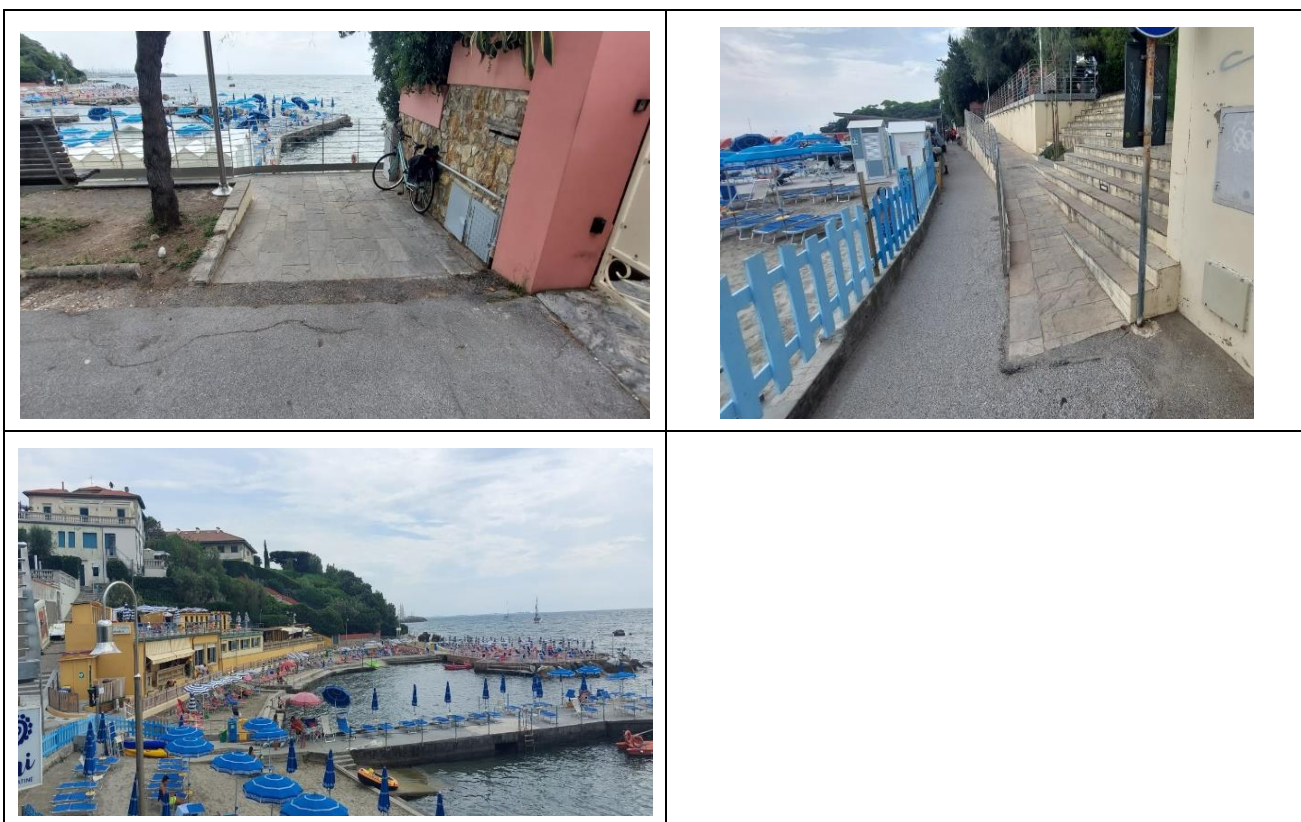
Arrival at the facility

Private/public parking

Presence of private parking	NO
Presence of parking space reserved for people with disabilities	YES
Type of parking lot	ASPHALT
Public parking nearby	NO
	

Pathway from the parking lot to the main entrance

Pathway from the parking lot to the entrance	via 2 ramps: the first length 250 cm, width greater than 100 cm, slope 6%; second length 23 metres, width over 100 cm, slope 7.5%
There are indicators and tactile maps	NO
Useful width of door/entrance passage	OTHER



Reception welcome

Umbrella booking system	<input checked="" type="checkbox"/> Via the web <input checked="" type="checkbox"/> Via telephone <input checked="" type="checkbox"/> On site
Presence of multilingual staff	YES
Presence of plant plan with legend of services available	NO
Presence of visuo-tactile map	NO
Noticeboard/information panel sat an average height of 130 cm in a well-lit area	NO

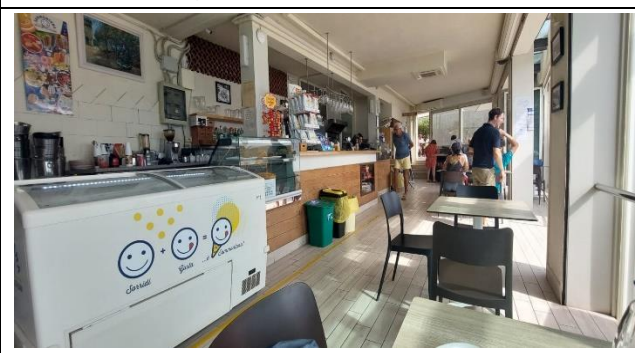




and a character size of at least 14 dpi with a contrast ratio greater than 4.5:1	
The staff has undergone training on welcoming people with various disabilities	NO

Bar/restaurant

Type of venue	Bar/restaurant
Access to the venue	via ramp length 140 cm, width 140 cm slope 6.8%
Useful width of door/entrance passage	greater than 90 cm
Bar counter	height greater than 100 cm
Type of tables	with central support
Space under the floor tables	greater than 70 cm
Multilingual menu	YES
Menu with large print characters	NO
Braille menu	NO
Table service for people with disabilities	YES
Availability of food for celiacs	<input type="checkbox"/> bread <input type="checkbox"/> pasta <input type="checkbox"/> cookies <input type="checkbox"/> ice creams <input checked="" type="checkbox"/> pre-packaged foods





Internal pathways and common services

Internal pathways

Indicate whether the pathways connecting the entrance to the beach are flat or with ramps in addition to those already described

flat paths and with a ramp 500 cm long and over 90 cm wide with a 13% gradient




Toilet and shower accessible to guests with reduced mobility

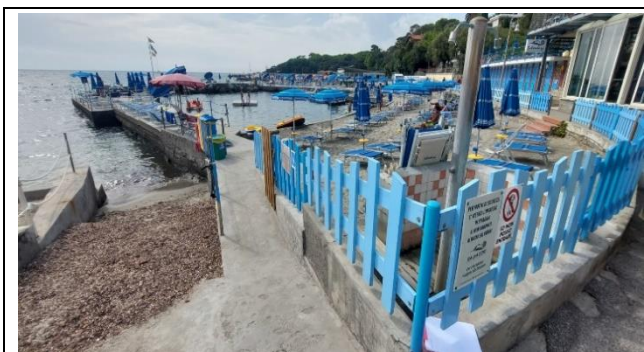
Number of toilets accessible/usable by guests with reduced mobility	1
Access to the venue	flat
Useful width of entrance door	greater than 90 cm
Toilet height	50cm
Open front toilet seat	YES
Support handles	to the right of the toilet
Flexible shower next to the toilet	YES
Free space on the sides of the toilet	to the left 25cm To the right greater than 90 cm





	Front greater than 90 cm
Electric bell/telephone	YES
Washbasin with space underneath for a wheelchair	greater than 70 cm
Height from the ground to the lower edge of the mirror	not sufficient for use by people in a wheelchair
Baby changing table	NO
	
Shower accessible to guests with reduced mobility available	NO
Access to the shower room if separated from the toilet room	via ramp length 400 cm, width 90 cm slope 18%
Useful width of entrance door/gap if separated from the toilet room	greater than 90 cm
Shower type	open type
Floor-level shower	NO with 17cm high step
Shower chair	missing
Support handle	NO
Presence of shower head or latch	fixed shower head
Electric bell/telephone	NO





Changing room

Changing room accessible to guests with reduced mobility available	YES
Access to the venue	via ramp length 500 cm, width greater than 90 cm, slope 13%
Useful width of door/entrance passage	greater than 90 cm
Dimensions of the changing room	sufficient for guest maneuvering in a wheelchair
Presence of cot	NO
Coat stand height from the floor	not detected





Beach

Type of beach	sand
Access to the beach	via ramp length 500 cm, width greater than 90 cm slope 13%
Walkway to reach the umbrellas	YES
Type of walkway	in concrete
Walkway width	100cm
	
	
Removable Platform between the walkway and the umbrella station to facilitate the passage and parking wheelchair	NO





<p>Amphibious beach chair available for helping people with reduced mobility to enjoy swimming (owned by the establishment or by association)</p>	<p>NO</p>
	

Children's play area

<p>Children's play area</p>	<p>missing</p>
<p>There are games for children with reduced mobility</p>	<p>NO</p>

Pool

<p>The property has a swimming pool</p>	<p>NO</p>
---	-----------

Medical practices/health facilities

<p>Hospitals near the facility</p>	<p>Cecina Hospital tel 0586 61411 – 15 km Riuniti Hospital in Livorno Telefono 0586 223111 - 30 km</p>
<p>Other healthcare facilities</p>	<p>ASL Rosignano Via A. Moro</p>



Project promoted by



Regione Toscana

TESTED BY: Handy Superabile - Social Promotion Association - in summer 2023

Project carried out with the contribution of



**Presidenza del
Consiglio dei Ministri**
Ministro per la disabilità